



Scouting America™

REGULAR
UNIFORM STRIP
SEWING INSTRUCTIONS

STEP 1

Press out wrinkles around pocket area ensuring a smooth placement. Use a steamer or iron on low heat.

BEFORE



AFTER



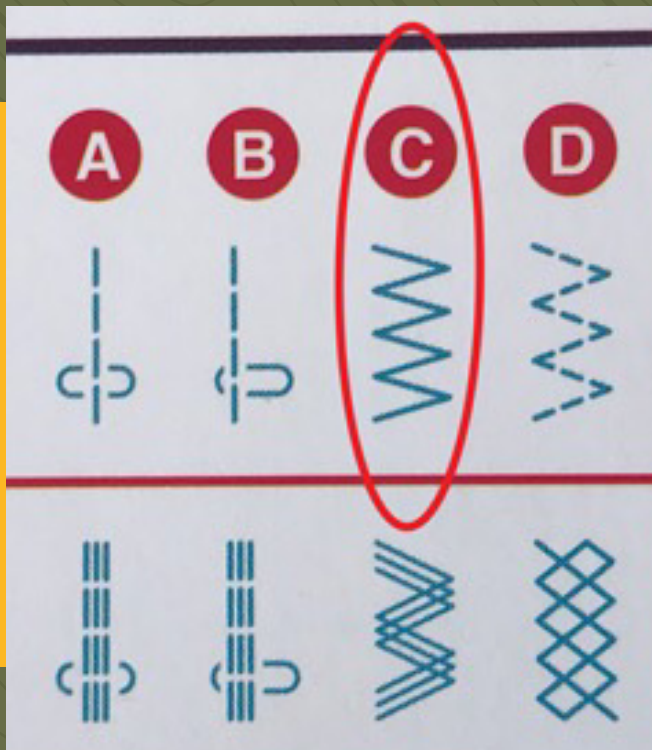
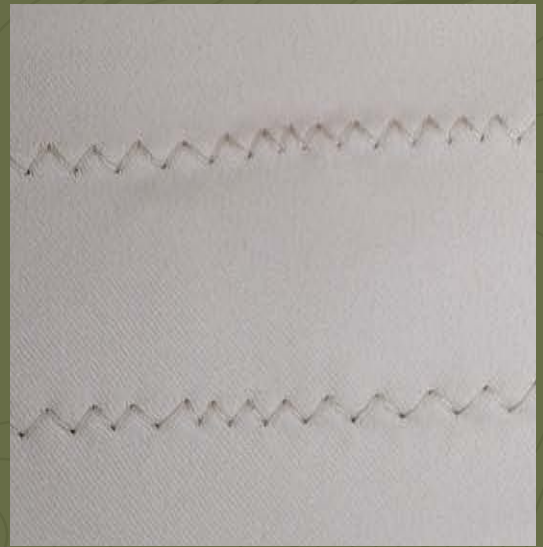
STEP 2

Place new patch over old embroidery centering the placement evenly with the middle of the pocket. Use pins or spray adhesive to hold the patch in place.



STEP 3

You may use clear nylon for top thread and tan colored cotton for bottom thread. Tan thread shows on inside of garment.



STEP 4

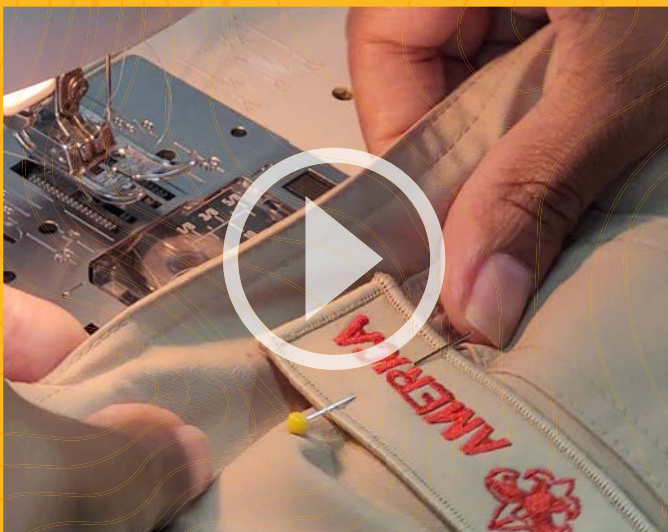
Select zigzag stitch on sewing machine.

STEP 5

Test your tension and stitch width setting on a scrap piece of fabric. If using portable sewing machine start tension between 3-4 then adjust if needed. If using industrial machine test tension on a scrap piece of fabric.

STEP 6

Start at long edge of patch. Use the hand wheel when pivoting each corner of the patch. Backstitch at the end when you finish sewing.



STEP 7

[Click Here to Watch >](#)

FINAL PRODUCT

Inside stitches should be straight with no puckering at the seams. Fabric should lay flat.



BACKSTITCH

Lots of puckering on the edges. Fabric is pulling. Tension on sewing machine was too high, it is stitching tighter than needed. Tension needs to be dialed down.



Minimal to no puckering on edges. Patch is laying flat on all edges. Surface is smooth.

