

**CONSTRUCTION NOTES:**

FOOTING AND SLAB AS PER PLAN, 2 \* 5 REBAR IN FOOTING CONTINUOUS AND 4 INCH BY 4 INCH WIRE MESH IN SLAB. CONCRETE IS TO HAVE FIBERMESH IN CONCRETE AND TWO SAW JOINTS ARE TO BE CUT IN SLAB FOR EXPANSION.

FRAMING AS PER PLAN ALL WALLS TO BE 2 BY 6 AT 16 INCH ON CENTER WITH \* SHEATHING ON EXTERIOR, TRUSS SYSTEM FOR ROOF INSTALLED AT 24 INCH ON CENTER AND SHEATHED OVER WITH 5/8 CDX PLYWOOD.

PLUMBING AS PER PLAN WITH THE FOLLOWING ITEMS.

- 1- ADA SHOWER MODEL \* SP-F3260HLH WITH LEFT SEAT.
- 1- ADA TOILET MODEL \* PF1403JWH WITH SEAT
- 4- 5 FT. FIBERGLASS SHOWERS MODEL \* AG 60366SHWH WITH DT13220 FIXTURE
- 9- PROFLOW TOILETS 1.6 GALLON WHITE MODEL \* PF1400JWH WITH SEATS
- 10- PF5414WH LAV. SINKS WITH FIXTURES 9-0520MPUDST AND 1- 0501LFHDF
- 1- 120 GALLON ELECTRIC WATER HEATER MODEL \* SFCE12020RTA1452083
- 2- HOSE BIBS ONE AT EACH SIDE.
- ALL SHOWER HEADS ARE 1.5 GMP CP

ELECTRICAL-

- 12- COMMERCIAL CAN LIGHTS \*MOTION ACTIVATED & SET ON TIMER\*
- 6- LIGHT IN RUNWAY AND WATER HEATER AREA.
- 10- HIGH CAPACITY EXHAUST FANS \*MOTION ACTIVATED & SET ON TIMER\*
- 11- BASEBOARD ELECTRIC HEATERS
- 12- 6FT OUTLETS \*1 IN EACH BATHROOM\*

ROOF IS STAND SEAMLESS 24 GAUGE STEEL WITH KYNAR FINISH, COLOR TO BE PICKED

EXTERIOR WALLS HARDPLANK SIDING WITH MIRATEC HDBD TRIM BOARDS.

DOORS ARE HOLLOW STEEL DOORS WITH 1 FT. BY 2 FT. VENT AND METAL JAMB. ALL DOORS HAVE CLOSER, PRIVACY DOOR KNOB, KEYED DEADBOLT, AND SILL. STORAGE DOOR WILL HAVE LOCKING DOOR KNOB WITH DEADBOLT.

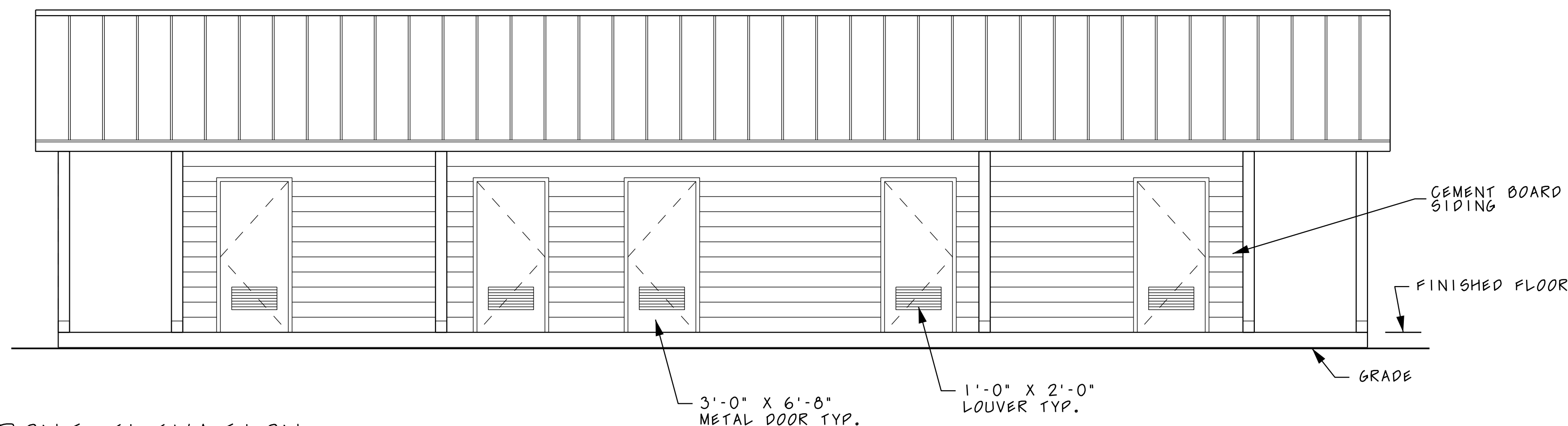
INSULATION IS R-19 IN WALLS AND CEILING.

INTERIOR OF EACH UNIT WILL BE LINED WITH FRP WALL PANELING, WALLS AND CEILINGS WITH 4 INCH COVE BASE.

EXTERIOR IS TO BE PAINTED WITH BENJAMIN MOORE EXTERIOR SUPER SPEC. LOW LUSTER ON SIDING AND CORNICE, AND BENJAMIN MOORE SOFT GLOSS FOR DOORS EXTERIOR AND INTERIOR.

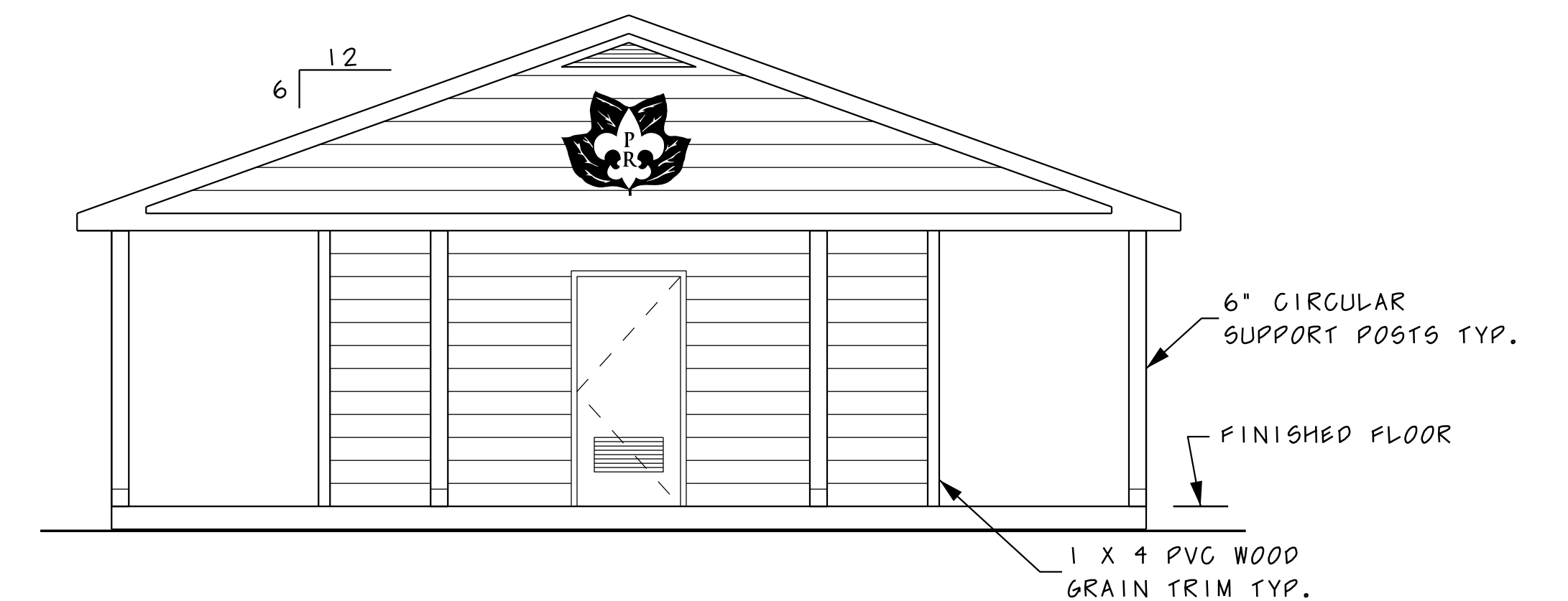
**FLOOR PLAN**

SCALE: 1/4" = 1'-0"



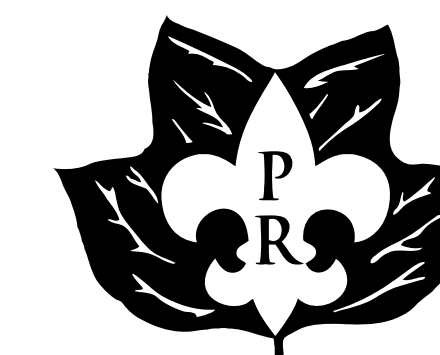
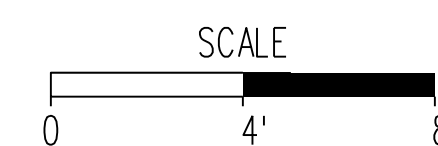
**FRONT ELEVATION**

SCALE: 1/4" = 1'-0"



**RIGHT SIDE ELEVATION**

SCALE: 1/4" = 1'-0"



PIPSICO SCOUT RESERVATION  
A TIDEWATER COUNCIL PROPERTY  
57 PIPSICO ROAD  
SPRING GROVE, VA 23881

**CENTRAL SHOWER REPLACEMENT**

SCALE: 1/4" = 1'-0" APPROVED BY: DRAWN BY: WMP  
DATE: 10-24-16 REVISED:

PIPSICO SCOUT RESERVATION

PRELIMINARY DRAWINGS

DRAWING NUMBER: 001